



<b>Height</b>	4¼"
<b>Width</b>	20"
<b>Depth</b>	8¾"
<b>Weight</b>	3 lbs
<b>Material</b>	Brass
<b>Bulb Quantity</b>	Built in LED Module
<b>Input Voltage</b>	120V
<b>Dimmable</b>	Mains Dimmable

### Finishes

Light Bronze

WA0377.LB.US

### Electrical Specification

Light Source

Built In LED Module

2700K / 860 lm

AC Wattage

9W

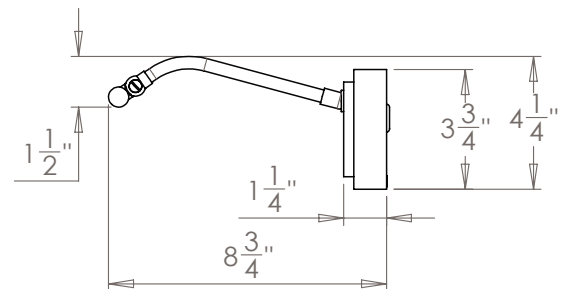
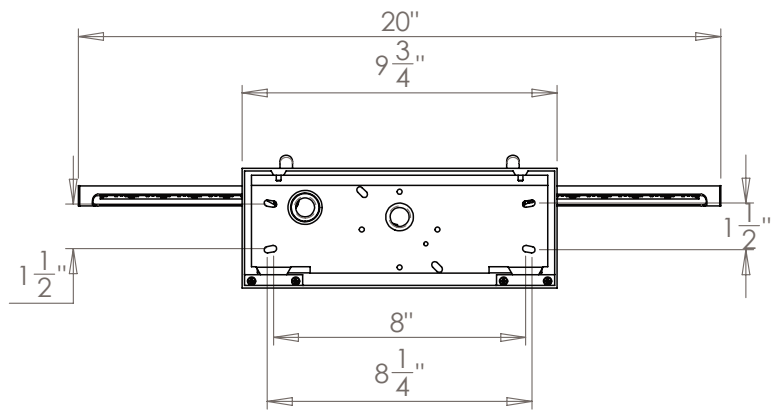
DC Current

300 mA CC

### Further Information

An integral LED unit is supplied fitted and is professionally replaceable. Also available in 12" (WA0375) and 16" (WA0376). Product also available without backplate in 12" (WA0342), 16" (WA0343), 20" (WA0344) and 24" (WA0345).

Product Class: Class I



**Please Note:-** These notes are for guidance only. Vaughan accepts no responsibility for any installation using the above notes. The final decision on installation remains with the installer.