

VAUGHAN

Chiswick Lantern

CL0239

US Version



Height	18¼"
Width	12¾"
Depth	12¾"
Weight	22 lbs
Material	Brass and Glass
Bulb Quantity	x1
Input Voltage	120V
Dimmable	Mains Dimmable

Finishes

Bronze

CL0239.BZ.US

Nickel

CL0239.NI.US

Bulb Specification

Bulb Base

E26 Medium Base

Max Wattage

60W

Bulb Supplied

No

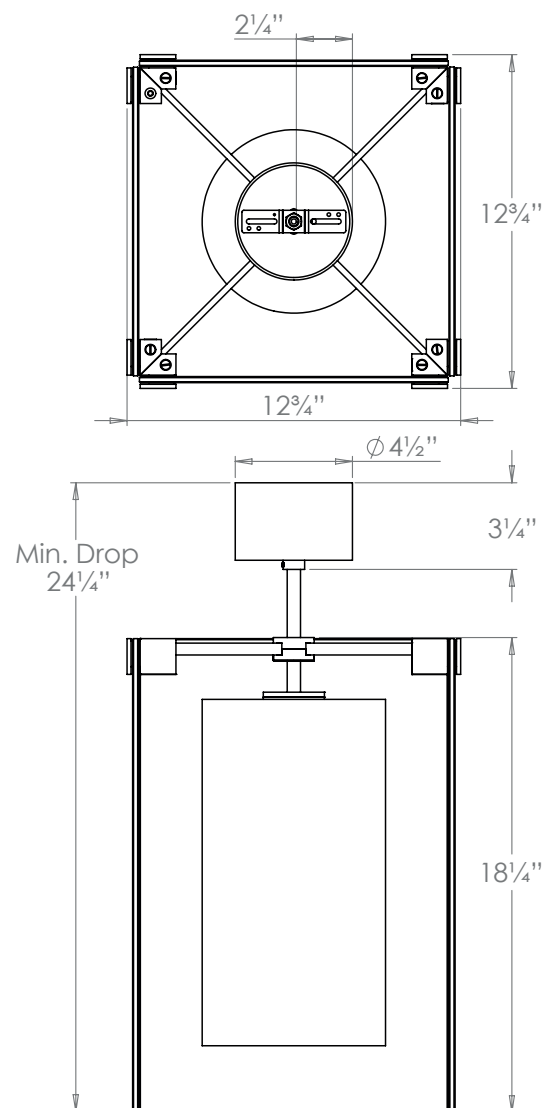
Vaughan Recommends

LED/2700K/500 lm

For a brighter light, a bulb with a higher lumen output can be used.

Further Information

The three sections of the fixed rod are 2¾", 6½" and 14½", giving total drops of 24¼", 28¼" and 34½".



Please Note:- These notes are for guidance only. Vaughan accepts no responsibility for any installation using the above notes. The final decision on installation remains with the installer.